



RWE Renewables UK Dogger Bank South (West) Limited and RWE Renewables UK Dogger Bank South (East) Limited

Dogger Bank South Offshore Wind Farms

Statement of Community Consultation

5 May 2023

Document Reference: 004648639

Revision: 3

Pursuant to section 47 (1) of the Planning Act 2008



RWE

Company:	RWE Renewables UK Dogger Bank South (West) Limited and RWE Renewables UK Dogger Bank South (East) Limited	Asset:	Development
Project:	Dogger Bank South Off-shore Wind Farms	Sub Project/Pack-age:	Consents
Document Title or Description:	Statement of Community Consultation – Draft for Consultation		
Document Number:	004648639-03	Contractor Reference Number:	n/a

COPYRIGHT © RWE Renewables UK Dogger Bank South (West) Limited and RWE Renewables UK Dogger Bank South (East) Limited.

All pre-existing rights reserved.

This document is supplied on and subject to the terms and conditions of the Contractual Agreement relating to this work, under which this document has been supplied, in particular:

LIABILITY

In preparation of this document RWE Renewables UK Dogger Bank South (West) Limited and RWE Renewables UK Dogger Bank South (East) Limited has made reasonable efforts to ensure that the content is accurate, up to date and complete for the purpose for which it was contracted. RWE Renewables UK Dogger Bank South (West) Limited and RWE Renewables UK Dogger Bank South (East) Limited makes no warranty as to the accuracy or completeness of material supplied by the client or their agent.

Other than any liability on RWE Renewables UK Dogger Bank South (West) Limited and RWE Renewables UK Dogger Bank South (East) Limited detailed in the contracts between the parties for this work RWE Renewables UK Dogger Bank South (West) Limited and RWE Renewables UK Dogger Bank South (East) Limited shall have no liability for any loss, damage, injury, claim, expense, cost or other consequence arising as a result of use or reliance upon any information contained in or omitted from this document.

Any persons intending to use this document should satisfy themselves as to its applicability for their intended purpose.

The user of this document has the obligation to employ safe working practices for any activities referred to and to adopt specific practices appropriate to local conditions.

Rev No.	Date	Status/Reason for Issue	Author	Checked by	Approved by
01	25 November 2022	First Issue	DB	AB/VL	
01.1	10 January 2023	Updated	DB	EJ	
2	08 February 2023	Update	EJ	TB/JB	CM
3	05 May 2023	Final	EJ	CM	CM

Contents

- 1. The Purpose of Community Consultation2
- 2. The Planning Process3
- 2.2. Environmental information4
- 3. About RWE6
- 4. Dogger Bank Offshore Wind Farm Projects7
- 4.1. Background.....7
- 4.2. The Project Description.....8
- 5. Previous non-statutory consultation10
- 6. Who we will consult12
- 7. What we will consult on13
- 8. Consultation materials and information.....15
- 9. Promoting the consultation16
- 10. How we will consult17
- 11. How to respond to our consultation.....20
- 12. Next steps21
- 13. Indicative Project Development Timeline22
- 14. Contact details22

Figures

- Figure 1 RWE’s offshore assets6
- Figure 2 Location of Dogger Bank South projects7
- Figure 3 Diagram of the proposed DBS East Wind Farm.....10
- Figure 4 Consultation Zone Map12
- Figure 5 Project development timeline.....22

1. The Purpose of Community Consultation

- 1.1.1. This document is a Statement of Community Consultation (SoCC). It sets out how RWE Renewables UK Dogger Bank South (West) Limited and RWE Renewables UK Dogger Bank South (East) Limited (hereafter referred to as RWE) intends to consult statutory consultees, stakeholders, affected residents and local communities about our proposals for the Dogger Bank South Offshore wind farm projects (DBS Projects), as required under the Planning Act 2008 (The Act).
- 1.1.2. This SoCC is prepared and published in order to satisfy the statutory requirements of section 47 of The Act.
- 1.1.3. We recognise consultation to be a vital stage in the development of our projects and this statutory consultation provides the opportunity for us to engage with communities, local authorities and stakeholders and for them to comment on the project as the plans evolve.
- 1.1.4. Consultation helps us identify valuable information, including about the potential impacts of a project, so that potential mitigation measures can be considered and, where appropriate, built into our designs before an application is considered.
- 1.1.5. This will allow us to develop our plans responsibly and in a manner that has consideration of local community interests.
- 1.1.6. In developing this SoCC, we consulted with and had regard to comments from East Riding of Yorkshire Council who are the Local Planning Authority and Hull City Council in respect of potential through construction traffic and harbour facilities which may be affected.

2. The Planning Process

- 2.1.1. Proposals for offshore wind farms over 100 megawatts (MW) are classified as a Nationally Significant Infrastructure Project (NSIP) under The Act. This means that development consent is required before construction of the DBS projects can begin.
- 2.1.2. We must therefore apply for a Development Consent Order (DCO) through the NSIP planning process for DBS. The application for development consent will be submitted to, and examined by, the Planning Inspectorate (PINS) on behalf of the Secretary of State for Business, Energy and Industrial Strategy. PINS will provide a recommendation to the Secretary of State, who will ultimately decide whether or not to grant the development consent for the project.
- 2.1.3. As part of the examination process, we must satisfy PINS that our pre-application consultation has been undertaken in accordance with the requirements of The Act. This includes identifying statutory consultees for the proposed consultation, under Section 42 of The Act. It also includes setting out how we propose to consult with the community in the vicinity of the project under Section 47 of the Planning Act, with this SoCC being published in accordance with this requirement.
- 2.1.4. Consent for the offshore arrays, offshore and onshore cable routes, and offshore and onshore substations, will be included in the DCO.
- 2.1.5. For more information on this process or advice on how to respond to our pre-application consultation, you can access The Planning Inspectorate's Advice Note Eight: Overview of the nationally significant infrastructure planning process for members of the public and others at: <https://infrastructure.planninginspectorate.gov.uk/legislation-and-advice/advice-notes/>

2.2. Environmental information

- 2.2.1. As set out in Regulation 12 of the Infrastructure Planning (Environmental Impact Assessment) Regulations 2017, we confirm that the DBS Projects constitute Environmental Impact Assessment (EIA) development. An EIA will therefore be carried out for the DBS Projects in accordance with Regulation 5 of The Infrastructure Planning (Environmental Impact Assessment) Regulations 2017.
- 2.2.2. The methodology and scope of the EIA will be agreed with PINS and in consultation with relevant regulatory bodies, environmental bodies and other stakeholders.
- 2.2.3. The following reports (listed below) will be consulted on as part of the EIA process and as the DCO application is prepared.

Scoping Report

- 2.2.4. The Scoping Report was submitted to PINs on 26 July 2022 (<https://infrastructure.planninginspect.orate.gov.uk/wp-content/ipc/uploads/projects/EN010125/EN010125-000181-DBS%20-%20Environmental%20Impact%20Assessment%20Scoping%20Report.pdf>)
- 2.2.5. It outlines the receptors that will be considered during the EIA and the proposed approach to data gathering. It also provides information on the assessment methodology in order to characterise the existing environment, assess potential impacts and develop mitigation measures. This will be refined during a programme of consultation with technical stakeholders throughout the EIA process.
- 2.2.6. The Scoping Opinion was received from the Secretary of State on 1 September 2022 (https://infrastructure.planninginspect.orate.gov.uk/wp-content/ipc/uploads/projects/EN010125/EN010125-000247-EN010125_Dogger%20Bank%20South_Scoping%20Opinion.pdf).

The Preliminary Environmental Information Report (PEIR)

- 2.2.7. The PEIR will provide the interim findings of the site characterisation and impact assessment. It will incorporate the findings of surveys and initial assessments and will enable consultees to develop an informed view of the potential environmental effects of the DBS Projects. We will be seeking feedback from local communities and other stakeholders on the PEIR during the statutory consultation (see the consultation timeline in Section 13 for more details).

Environmental Statement (ES)

- 2.2.8. The ES will report on the final conclusions of the impact assessments, based on the findings of undertaken surveys, and will address, as appropriate, representations made in relation to the PEIR. It will also describe any changes made to the project since publication of the PEIR, and any mitigation measures that need to be implemented. The ES will form part of the DCO application for submission.
- 2.2.9. While DBS is made up of two separate projects (DBS East and DBS West), we are submitting a single DCO application with a combined Environmental Impact Assessment. This will allow for consistency across the projects on approach to assessments, consultation and examination. The assessment will consider the possibility that the projects are developed either concurrently or sequentially.

3. About RWE

- 3.1.1. RWE is one of the world's leading renewable energy companies and is a key player in the offshore wind market.
- 3.1.2. RWE has been involved in offshore wind energy in the UK since the very start, having installed the first full scale offshore turbines at Blyth in 2000 and commissioned the UK's first commercial wind farm in 2003, the 60 MW North Hoyle.
- 3.1.3. RWE is the UK's second largest power producer and third largest renewable generator supplying around 12% of UK electricity.
- 3.1.4. In the UK, we currently operate:
 - 10 offshore wind farms;
 - 33 onshore wind farms;
 - 21 hydro plants;
 - 1 biomass plant.
- 3.1.5. We are dedicated to generating electricity using sustainable and environmentally friendly resources. We do this by harnessing the natural power of wind, water and biomass into significant sources of renewable energy for the UK's present, and future, electricity needs. Our offshore assets are presented in the map below.

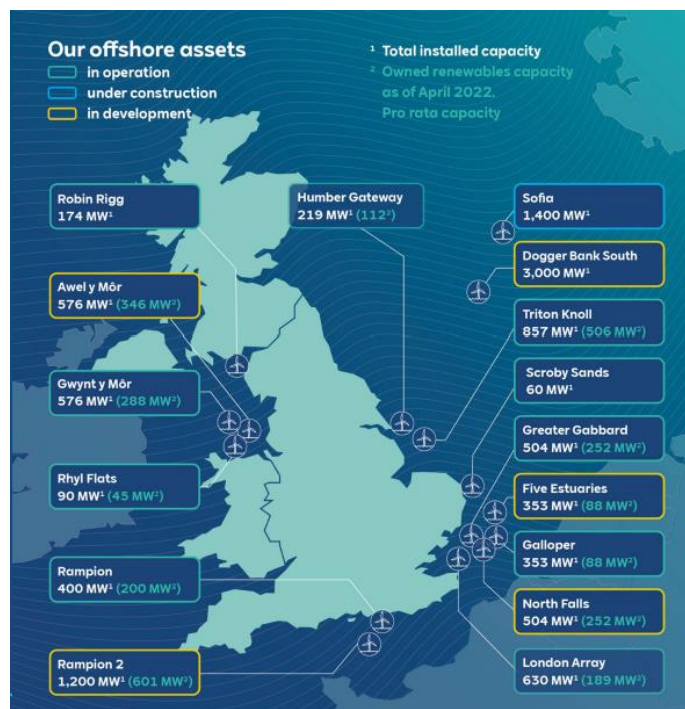


Figure 1 RWE's offshore assets

4. Dogger Bank Offshore Wind Farm Projects

4.1. Background

4.1.1. In February 2021, under The Crown Estate’s Offshore Wind Leasing Round 4 tender process, RWE was awarded the status of preferred bidder for two projects which make up Dogger Bank South (DBS), located in the Southern North Sea. The DBS projects are known individually as DBS East and DBS West and will be located over 100 kilometres off the coast of northeast England (see figure 4.1 below).

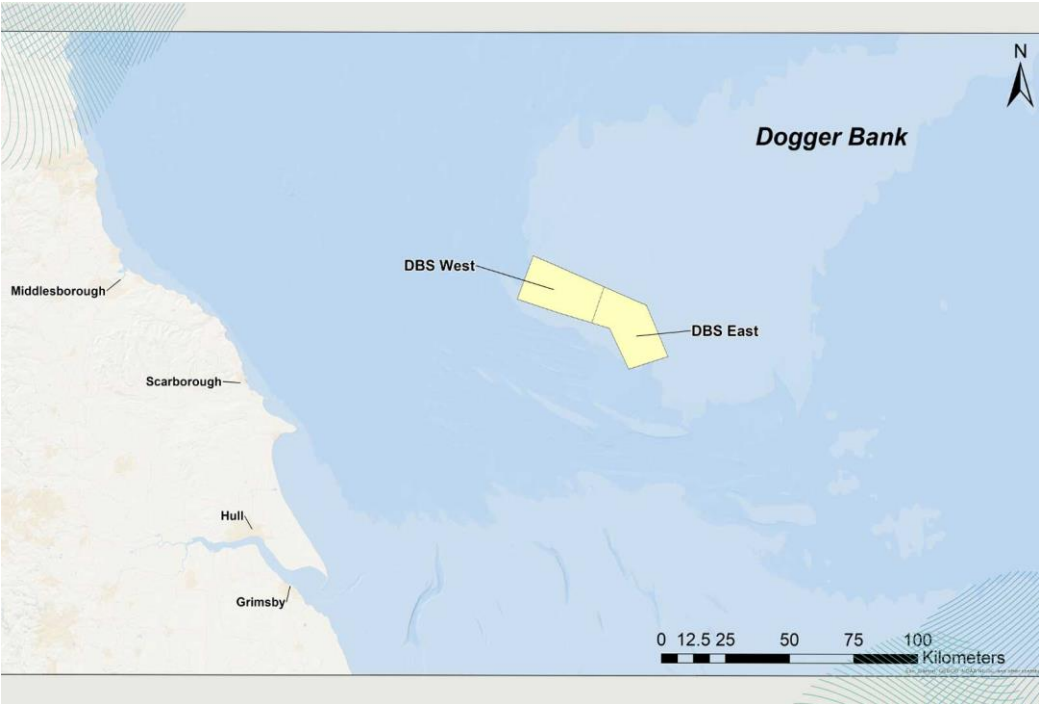


Figure 2 Location of Dogger Bank South projects

- 4.1.2. If each Project has an installed capacity of 1.5GW (3GW in total), the projects could generate enough electricity to power up to 3.4 million typical UK households with clean, green electricity each year helping to meet the UK Government's offshore wind and net zero targets.
- 4.1.3. Electricity generated by the projects will be brought ashore via subsea cables in the vicinity of Skipsea on the Yorkshire coast. Underground cables will be installed from landfall to onshore substations (one for each project) and onward cabling installed from the substation to connect to the national grid.
- 4.1.4. National Grid ESO, the UK electrical system operator, has identified that connections to the national grid will be made at a new national grid substation in the vicinity of the existing National Grid Creyke Beck substation. The DBS substations will be located near to this new site. This infrastructure will also need to take into account wider network function as part of a 'holistic network' design for the connection of a number of offshore wind farms, as required by National Grid ESO and Ofgem.
- 4.1.5. Each of the DBS projects will be served by its own project specific infrastructure, but cable corridors, landfall zones and substation sites will be shared or complimentary where practicable to reduce impacts on communities and the environment.

4.2. The Project Description

The Offshore Array

- 4.2.1. The offshore array encompasses the wind farm site itself, and includes:
 - the wind turbines and foundations;
 - offshore platforms (including substations);
 - 'inter-array' cables linking the wind turbines and the offshore substations;
 - service operation vehicle (SOV) mobile facility for operations and maintenance staff and equipment.
- 4.2.2. At this early stage, it is not possible to confirm the size and number of turbines at DBS. The final number will be determined after consent has been achieved but before construction commences following detailed engineering and environmental studies and engagement with the supply chain.

The Electrical System

- 4.2.3. The electrical system is required to connect the wind farms to the national grid, and includes:
- offshore export cables which will transport the electricity generated from the offshore arrays to shore;
 - onshore buried jointing pits, located at a 'landfall zone' on the Holderness Coast, where the offshore and onshore electricity cables connect to each other;
 - onshore underground cable routes, which will have a combined construction width for both projects of approximately 100m width, to accommodate the cables and construction infrastructure such as haul roads and soil storage. The underground cables will connect the electricity generated from the offshore wind turbines to new onshore electricity substations for the Projects;
 - onshore electricity substations which will transform the electricity generated by the offshore wind turbines to a voltage suitable for connection to the national grid. The DBS substations will be located near a new National Grid substation at Creyke Beck. It is anticipated that the total permanent footprint of the substations will be approximately 200 hectares and the tallest buildings could be up to 24 metres in height;

- additional onshore underground cables to transmit the electricity from the new DBS substations to the National Grid substation.

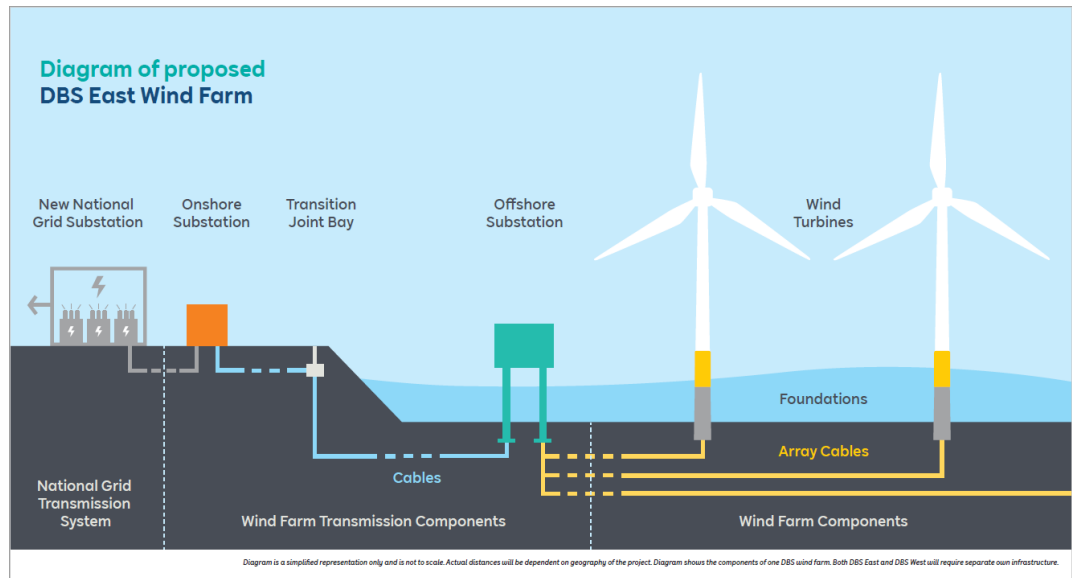


Figure 3 Diagram of the proposed DBS East Wind Farm

5. Previous non-statutory consultation

- 5.1.1. A non-statutory consultation on our proposals was held between 9 September and 14 October 2022. The purpose of this consultation was to:
 - Introduce the DBS projects;
 - Explain the site selection process and options for the substation zones and onshore cable corridor, and;
 - Collect feedback on our proposals.
- 5.1.2. Invitations were sent to around 19,000 homes and businesses within the non-statutory consultation zone, along with letters and emails to stakeholders including local MPs, councillors and parish councils.
- 5.1.3. We held 4 public consultation events which were attended by 393 people, and had over 679 visitors to the consultation pages on our website.
- 5.1.4. We received 63 responses to the consultation.
- 5.1.5. The key themes arising from the responses included:
 - Archaeology and cultural heritage – including location of sites, scheduled monuments and listed buildings.

- Ecology – information on areas important to wildlife and details of species found in the area.
- Landscape and visual – concerns about the potential visual impacts of development within the different substation zones, and how different views might be affected.
- Public rights of way (PRoW) – importance of ensuring minimal impacts on PRoW during construction.
- Flood risk and drainage – detailed information about historical flooding across the area, and the importance of minimising impact on local drainage systems.
- Cumulative impact – other developments in the area were identified and concerns raised about the potential cumulative impact of the DBS projects.

6. Who we will consult

- 6.1.1. This consultation is open to anyone who may be interested or in any way feels impacted by our proposals. Under Section 47 of The Act, we have a duty to consult with individuals and communities living within the vicinity of the land affected by the DCO application.
- 6.1.2. We will write to residential and business addresses with the consultation zone. The consultation zone includes all properties within 3km of the proposed substations zones, within 1.5km of proposed landfall zones and within 1km of the proposed onshore cable corridor. The distance will be measured from the red line boundary of the projects.

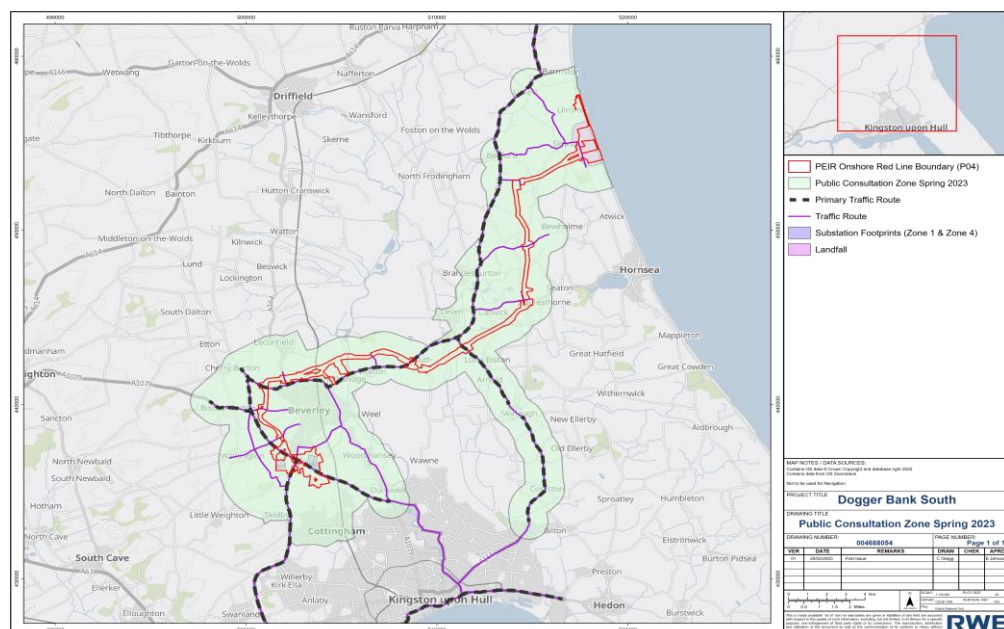


Figure 4 Consultation Zone Map

- 6.1.3. Our consultation will also involve organisations representing local residents, businesses, and communities. We will work with the Local Planning Authority (LPA) East Riding of Yorkshire Council, among others, to identify any key resident and community groups.
- 6.1.4. We will also consult the following groups and individuals:
- parish and town councils directly affected by the proposals and in the immediate vicinity
 - commercial stakeholders (including asset owners and the fisheries industry);

- Members of Parliament (MPs) representing constituencies both within and bordering the consultation zone;
 - elected representatives in local authorities where the project is situated, including briefings for members during the statutory consultation period as requested;
 - ‘seldom heard’ and ‘hard to reach’ groups who have been drawn to our attention, representing people who are unlikely to respond to traditional consultation techniques and may need additional support to access materials;
 - local interest groups, such as residents’ associations, and groups with particular specialisms, such as local heritage or wildlife.
- 6.1.5. In addition to the local community, we will consult prescribed bodies and local authorities under section 42(1)(a), (aa) and (b) of The Act. We will also consult Persons with an Interest in Land (PILs) under sections 42(1) (d) and 44.
- 6.1.6. We encourage interested parties to submit their feedback via our communication lines, which include our dedicated DBS projects website (www.doggerbanksouth.co.uk), email address (dbs@rwe.com), Free-phone information line (0800 254 5459) and post (FREEPOST DBSOWF).
- 6.1.7. Interested parties can also register their interest at our project website to receive regular updates on the DBS projects and our proposals.

7. What we will consult on

- 7.1.1. We will seek feedback on our proposals for the DBS projects, including but not limited to the following:
- Proposals for the offshore array;
 - Proposals for the onshore infrastructure (onshore underground cable routes, substation locations, connection to the national grid);
 - potential environmental effects (e.g. landscape and visual amenity, terrestrial/marine ecology, wildlife);
 - economic effects (e.g. commercial activities such as shipping and fisheries, employment opportunities);
 - community effects (e.g. public rights of way);
 - traffic and transport impacts;
 - construction methodology and temporary construction areas;

- potential environment mitigations.
- 7.1.2. The project will continue to evolve in response to consultation feedback, further design, and assessment. If any substantive changes are made to the design of the project following this statutory consultation, we will consider whether there is a requirement for further consultation as appropriate.
- 7.1.3. As part of the submission of an application for development consent, an Environmental Statement (ES) will be prepared. This document will present an assessment of likely significant effects and proposed mitigation based on the final design parameters.

8. Consultation materials and information

8.1.1. The following consultation materials will be developed to help people understand the proposals for the project and provide their feedback.

Project website	We have set up dedicated project website pages where all information on the project will be published, along with details of how to provide feedback on proposals
Letters	We will write to all stakeholders in advance of the consultation launch and all properties within the consultation zone as set out in 6.1.2
Newsletter	<p>We will publish a newsletter with the following information:</p> <ul style="list-style-type: none"> • overview of the proposals and project map • project website details and instructions on how to access information • information about public consultation events • information about webinars and how to sign up • details of community access points <p>The newsletter will be sent out to everyone who has signed up to receive information about the project. It will be made available at local access points in advance of the consultation and will be distributed to stakeholders. It will also be published on the project website and paper copies will be available on request.</p>
Preliminary Environmental Information Report (PEIR)	<p>We will make the full PEIR available on the project website. Electronic copies will be available for inspection at public events</p> <p>Copies on USB will be made available on request and subject to a production charge.</p>
A non-technical summary	A non-technical summary of the PEIR will be published.
Non-statutory consultation report	A report detailing the Introductory Consultation which was held in September – October 2022 including a summary of responses received and how we have had regard to the feedback.
Consultation booklet	An overview booklet will be published to explain the project, its various components and where to find more detailed information or contact the project team. The document will be written in non-technical language.
Feedback questionnaire	A questionnaire with qualitative and quantitative questions will be produced to capture consultation feedback. The questionnaire will be available to complete online or downloaded to be completed and returned via email or post.

	Paper copies of the questionnaire will be available at consultation events, community access points and mailed on request.
Consultation banners	Consultation banners will be produced to provide an overview of the project at consultation events. Banners will be designed to assist the understanding of the plans and allow for further discussion with members of the project team. Members of the public will be able to view the consultation banners at the public events or online, on the project website.
Project maps	Paper copy and digital maps will be made available at consultation events and on the website, to assist understanding of the proposals.
Consultation presentation	A digital presentation reflecting the information provided in the consultation brochure and on consultation banners, including project maps will be produced for use at webinars and briefings meetings.

- 8.1.2. Paper copies of the materials can also be made available upon request, (large documents, such as the PEIR may be subject to a printing charge).

9. Promoting the consultation

- 9.1.1. We will distribute the newsletter in advance of the consultation to all residential and business addresses with postcodes in the consultation zone set out in 6.1.2.
- 9.1.2. Copies of the newsletter will also be mailed directly to MPs, elected members, parish/town councils, and neighbouring local authorities/councils.
- 9.1.3. We will raise awareness of the consultation to those living outside of this area through the following methods of engagement:
- placing advertisements in local newspapers (including the local edition of the Hull Daily Mail and Beverley Life);
 - liaising with all parish councils along the onshore cable route to advertise the consultation in parish magazines and on local parish websites and social media pages where possible. We will also provide posters to display locally to raise awareness of the consultation;
 - issuing media releases to local TV, radio and press to promote the consultation.

9.1.4. The consultation will also be promoted via statutory notices published in local and national newspapers (including the London Gazette), giving details about the consultation in accordance with Section 47 and 48 of The Act.

10. How we will consult

10.1. Public consultation events

10.1.1. We will hold five public consultation events during the consultation period. The locations have been selected to be close to the project sites as follows:

- two events close to the potential landfall zones;
- two events near to the potential substation zones;
- one event broadly midpoint along the proposed onshore cable corridor.

The consultation events are confirmed as follows:

Date	Time	Location
Friday 9 June 2023	3pm – 7pm	Beverley Memorial Hall 73-75 Lairgate Beverley, East Yorkshire HU17 8HN
Saturday 10 June 2023	3pm – 7pm	Skipsea Village Hall Bridlington Road Skipsea YO25 8TJ
Thursday 22 June 2023	3pm – 7pm	Leven Sports Hall North Street Leven HU17 5NF
Friday 23 June 2023	3pm – 7pm	Skipsea Village Hall Bridlington Road Skipsea YO25 8TJ
Saturday 24 June 2023	11am – 4pm	Beverley Memorial Hall 73-75 Lairgate Beverley, East Yorkshire HU17 8HN

- 10.1.2. The consultation events will be open to anyone who has an interest in the project. Attendees will have the opportunity to view exhibition banners and other materials about the project, and to discuss the proposals with members of the team and provide feedback on the proposals.

10.2.Consultation webinars

- 10.2.1. We will hold two webinars during the consultation period, the precise dates and times are to be confirmed:
- one webinar during normal office hours;
 - one webinar during the evening.
- 10.2.2. The online webinars will provide an opportunity for those who are not comfortable in a face to face environment to find out more information about the proposals and to ask questions to the team for a response.
- 10.2.3. Members of the public can sign up for a webinar online through our consultation website, by email using our email address or over the phone using our freephone number.

10.3.Stakeholder briefings

- 10.3.1. We will offer face to face and/or virtual briefing meetings with the following stakeholders in the run up to or during the consultation:
- Members of Parliament;
 - elected representatives of East Riding of Yorkshire Council;
 - parish and town councils close to the proposals;
 - local planning authority officers.
- 10.3.2. We will meet with other organisations and individuals on request. These may include:
- prescribed bodies and local authorities under section 42(1)(a), (aa) and (b) of The Act;
 - persons with an Interest in Land (PILs) under sections 42(1) and 44 of The Act;
 - groups and organisations representing local residents, businesses and communities;
 - other interest groups with a close relationship to the DBS projects.

10.4.Consultation website

- 10.4.1. We know that concerns around coronavirus remain so we will have a dedicated consultation website which will be available throughout the entire consultation period. The consultation website gives the opportunity for those unable to make the public exhibitions to view all of the documentation and easily respond to the consultation.
- 10.4.2. The consultation website will contain all of the information available at public exhibition events including detailed reports, exhibition boards and maps.

10.5.Community access points

- 10.5.1. Whilst this is no longer a statutory requirement, paper copies of the consultation booklet, non-technical summary of the PEIR, newsletter and questionnaire will be made available at the following locations from the 6 June 2023. Each location has computer facilities available for public use which will allow access to the PEIR and other consultation documents on the website: www.doggerbanksouth.co.uk

Location	Opening times
Driffield Centre Cross Hill, Driffield YO25 6RQ	Monday 9.30am – 6.30pm, Tuesday 9.30am – 4.30pm, Wednesday 9.30am – 4.30pm, Thursday 9.30am – 4.30pm, Friday 9.30am – 4.30pm, Saturday 9.30am – 12.30pm, Sunday Closed
Beverley Library Champney Road, Beverley HU17 8HE	Monday 9.30am – 5pm, Tuesday 9.30am – 8pm, Wednesday 9.30am – 5pm, Thursday 9.30am – 8pm, Friday 9.30am – 5pm, Saturday 9am – 4pm, Sunday Closed
Bridlington Central Library King Street, Bridlington YO15 2DF	Monday 9.30am – 5pm, Tuesday Closed, Wednesday 9.30am – 6pm, Thursday 9.30am – 3pm, Friday Closed, Saturday 9.30am – 1pm, Sunday Closed
Cottingham Centre Market Green, Cottingham HU16 5QG	Monday 9.30am – 4.30pm, Tuesday 9.30am – 4.30pm, Wednesday Closed, Thursday 9.30am – 6.30pm, Friday 9.30am – 1pm, Saturday 9.30am – 12.30pm, Sunday Closed
Greenwood Avenue Library 220 Greenwood Avenue Hull HU6 9RA	Monday 10am – 5pm, Tuesday 10am – 5.30pm, Wednesday 10am – 6.30pm, Thursday Closed, Friday 10am – 5pm, Saturday 10am – 1pm, Sunday Closed
Hornsea Library Broadway, Hornsea HU18 1RU	Monday 9.30am – 4.30pm, Tuesday 12.30pm – 6.30pm, Wednesday Closed, Thursday 9.30am – 1.30pm, Friday 9.30am – 4.30pm, Saturday 9.30am – 12.30pm, Sunday Closed

Leven Library 74 East Street, Leven HU17 5NG	Monday Closed, Tuesday Closed, Wednesday 10.30am – 12.30pm and 3.30pm – 7pm, Thursday Closed, Friday Closed, Saturday Closed, Sunday Closed
Bridlington Community Hub 1 st Floor 2a Marshall Avenue Bridlington YO15 2DS	Monday Closed, Tuesday 10am – 4.30pm, Wednesday 10am – 4.30pm, Thursday Closed, Friday Closed, Saturday Closed, Sunday Closed

11. How to respond to our consultation

- 11.1.1. The statutory consultation period will run for six weeks commencing on 6 June 2023 and closing on 17 July 2023.
- 11.1.2. During the consultation period people will be able to submit their feedback on the proposals for the project.
- 11.1.3. This can be done in the following ways:
- online via the consultation website (www.doggerbanksouth.co.uk)
 - by completing a questionnaire at one of the public consultation events
 - by post sending to FREEPOST DBSOWF
 - by email (dbs@rwe.com)
- 11.1.4. Consultation responses received by any other method than those listed above, such as through social media, will not be formally recorded as part of the consultation. Responses provided orally, such as via telephone, will be accepted in exceptional circumstances on a case-by-case basis when someone may not otherwise be able to respond to the consultation.

12. Next steps

- 12.1.1. Following the close of the consultation, the feedback will be collated, reviewed and analysed alongside any and all responses received as part of the consultation activities held in line with sections 42 and 48 of the Planning Act 2008. Our proposals will be reviewed in light of the feedback.
- 12.1.2. If, following the statutory consultation, we consider it is necessary to undertake further targeted statutory consultation, this would be undertaken, so far as relevant and proportionate, in accordance with the principles and methods set out in this SoCC.
- 12.1.3. The proposed application will then be finalised, taking into consideration the feedback received.
- 12.1.4. A Consultation Report will be produced as part of our application for development consent, as required by section 37(3)(c) of the Act. The report will include a summary of the consultation process undertaken in accordance with this document and will set out how the feedback from the consultation has shaped and influenced the final proposals. Responses to the consultation and extracts of responses may be published as part of the report unless specifically stated in the response.
- 12.1.5. Following submission, PINS will decide whether the application meets the required standards to proceed to examination and will determine whether the statutory consultation process has been adequate. As part of this process, local authorities will be invited to comment on the adequacy of the consultation.
- 12.1.6. The Consultation Report will be available online once an application for development consent has been submitted. Paper copies will be available on request and may be subject to a printing charge.

12.2. Further consultation

- 12.2.1. Once we have submitted our DCO application, there will be opportunities to submit written comments on the documents and to raise key points with the Examining Authority during public hearings. These will be publicised at the appropriate time. Guidance on the DCO process can be found here: <https://infrastructure.planninginspectorate.gov.uk/wp-content/uploads/2013/04/Advice-note-8.0.pdf>

13. Indicative Project Development Timeline

13.1.1. The indicative development timeline for the projects is expected to be as set out below:

- Scoping Report submitted 26 July 2022
- Introductory consultation held 9 September to 14 October 2022
- Consultation on PEIR (statutory consultation) Q2 2023
- Submission of DCO application Q1 2024
- Acceptance and pre-examination Q1 – Q3 2024
- Examination Q3 2024 – Q1 2025
- Recommendation and decision Q1 - Q3 2025

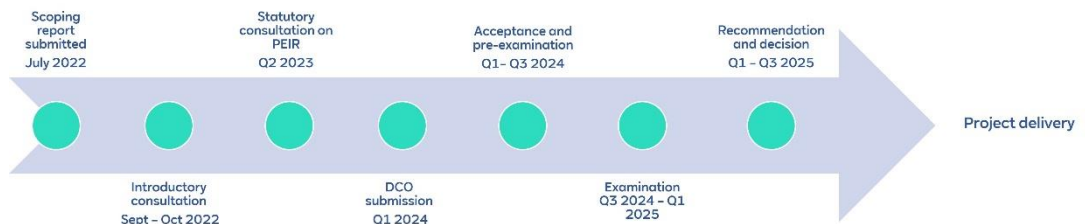


Figure 5 Project development timeline

14. Contact details

- Post: FREEPOST DBSOWF
- Email: dbs@rwe.com
- Telephone: 0800 2545459
- Website: www.doggerbanksouth.co.uk

**A large print version of this document is available,
please visit www.rwe.com/doggerbanksouth or
phone **0800 254 5459****

**RWE Renewables UK Limited
Windmill Hill Business Park
Whitehill Way
Swindon
Wiltshire, SN5 6PB**