

Legend

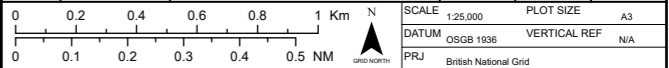
- Onshore Development Area
- Sections of Onshore Cable Route
- Landfall Zones
- Indicative Landfall HDD Compound Locations
- Access Work Area
- Vegetation Clearance Extents
- Visibility Splay Work Area
- Potential Road Widening Area
- Indicative Zone Of Off Route Access
- Indicative Temporary Construction Compound Zones
- Indicative Trenchless Crossing Zones
- 100m Cable Corridor

MAP NOTES / DATA SOURCES:
 Contains OS data © Crown Copyright and database right 2023
 Contains data from OS Zoomstack, Esri UK, Esri, HERE, Garmin, Foursquare, FAO, METI/NASA, USGS, Esri, Ordnance Survey, NASA, NGA, USGS
 Not to be used for Navigation.

PROJECT TITLE **Dogger Bank South**
DRAWING TITLE **GIS Data for Public Map Onshore**

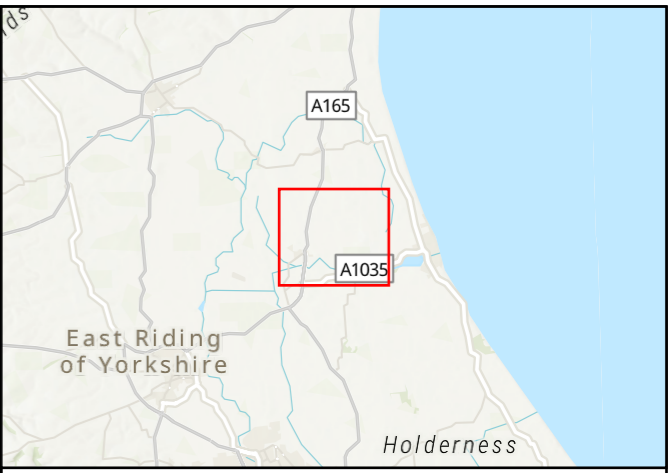
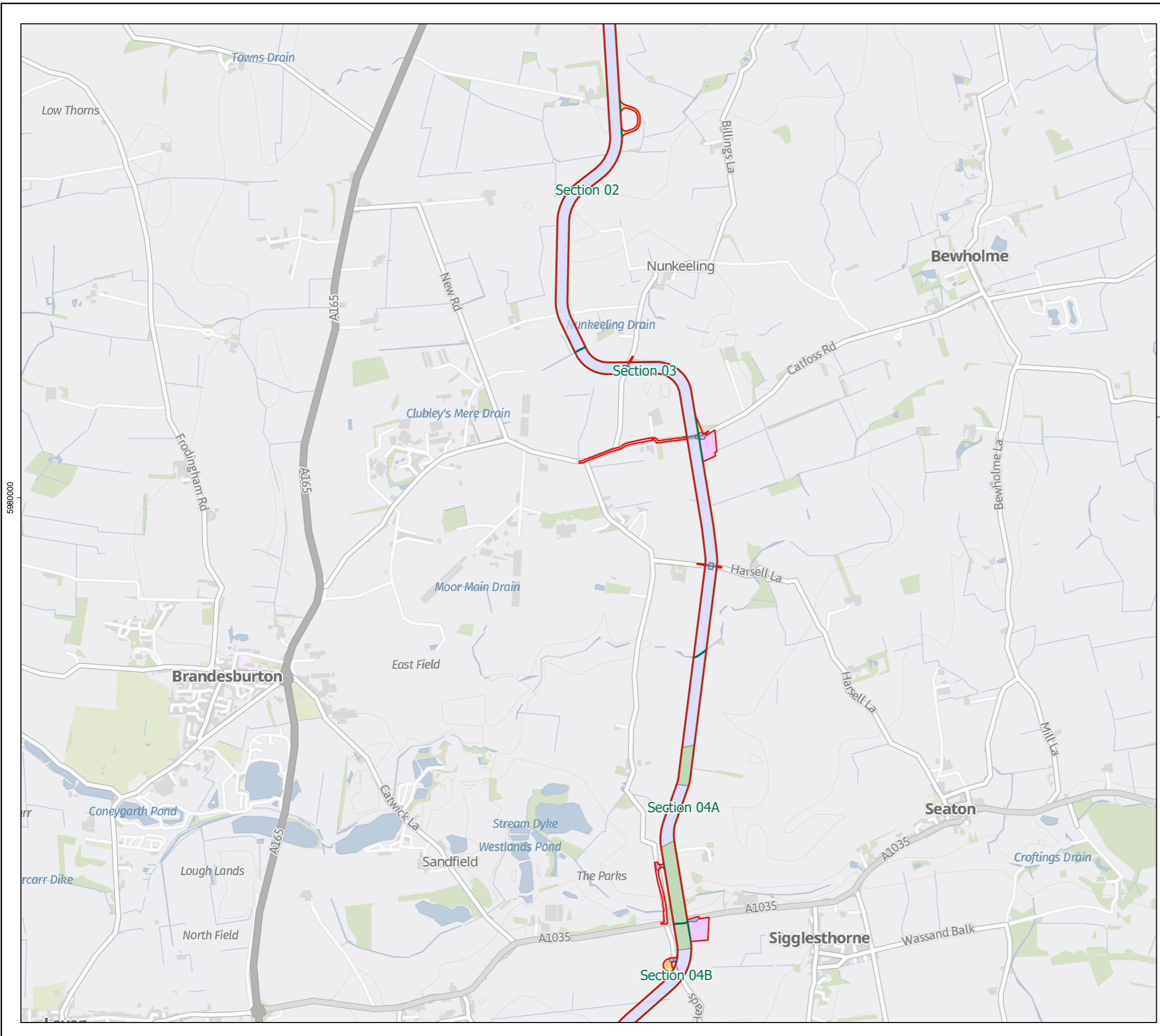
DRAWING NUMBER: **004782314-02** **PAGE NUMBER:** **Page 1 of 1**

VER	DATE	REMARKS	DRAW	CHK	APRD
0	12/05/2023	First Issue	C Gregg		E Johnson
0	03/11/2023	Updated with ES/DCO Stage Data	C Gregg		E Johnson



This is made available "as is" and no warranties are given or liabilities of any kind are assumed with respect to the quality of such information, including, but not limited to, its fitness for a specific purpose, non-infringement of third party rights or its correctness. The reproduction, distribution and utilization of this document as well as the communication of its contents to others without explicit authorisation is prohibited. Copies - digital or printed are not controlled.





Legend

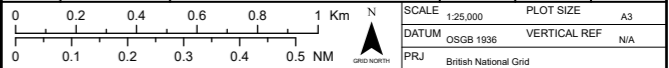
- Onshore Development Area
- Sections of Onshore Cable Route
- Access Work Area
- Vegetation Clearance Extents
- Visibility Splay Work Area
- Potential Road Widening Area
- Indicative Zone Of Off Route Access
- Indicative Temporary Construction Compound Zones
- Indicative Trenchless Crossing Zones
- 100m Cable Corridor

MAP NOTES / DATA SOURCES:
 Esri, CGIAR, USGS. Contains OS data © Crown Copyright and database right 2023
 Contains data from OS Zoomstack, Esri UK, Esri, HERE, Garmin, Foursquare, FAO, MET/NASA, USGS
 Not to be used for Navigation.

PROJECT TITLE **Dogger Bank South**
DRAWING TITLE **GIS Data for Public Map Onshore**

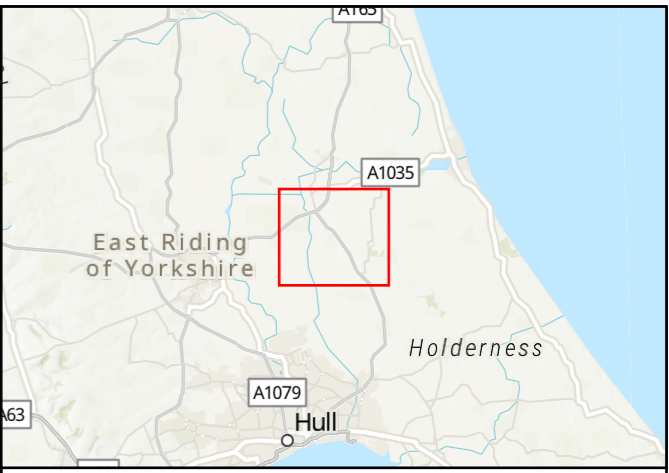
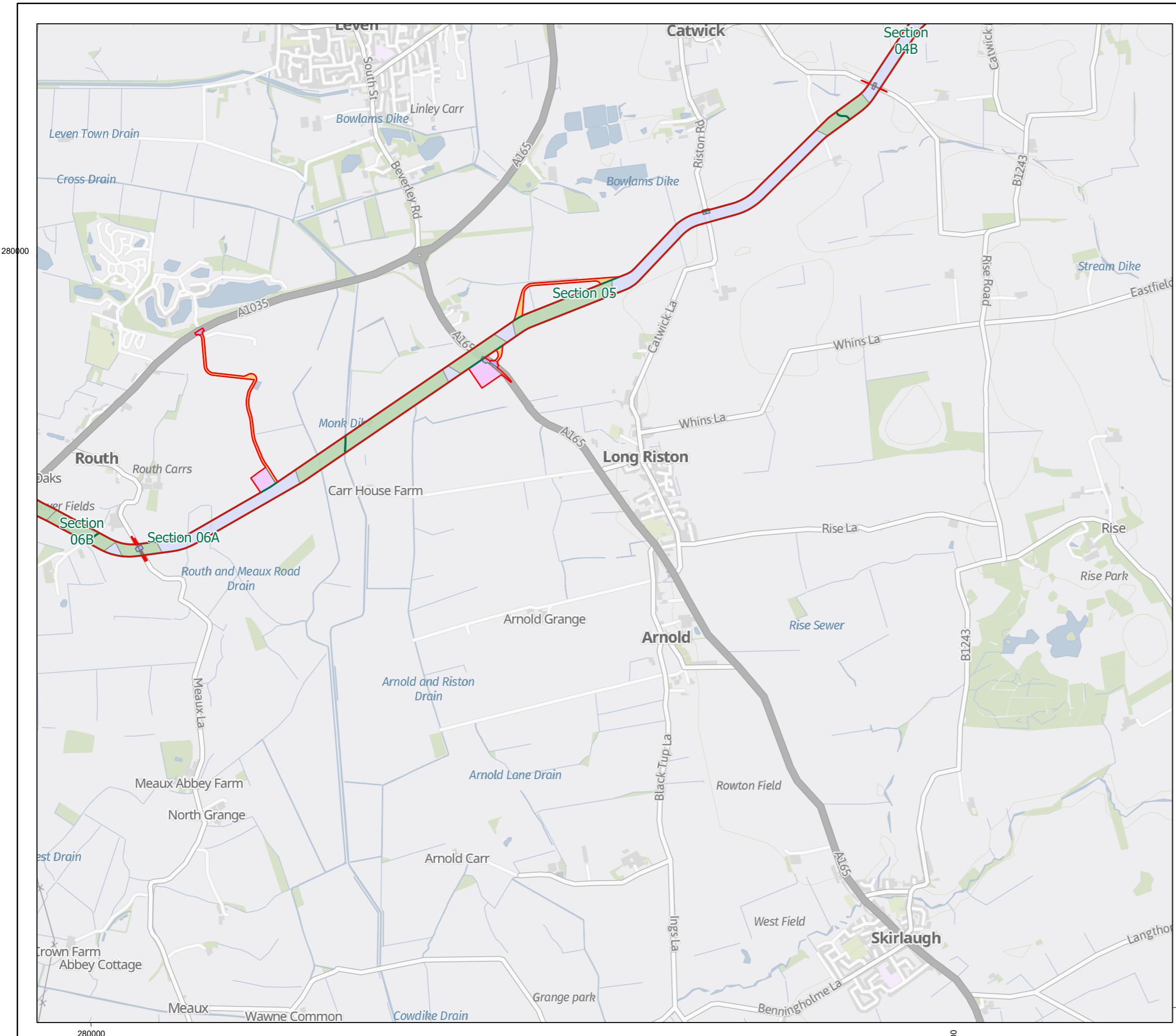
DRAWING NUMBER: **004782314-02** **PAGE NUMBER:** **Page 1 of 1**

VER	DATE	REMARKS	DRAW	CHEK	APRD
0	12/05/2023	First Issue	C Gregg		E Johnson
0	03/11/2023	Updated with ES/DCO Stage Data	C Gregg		E Johnson



This is made available "as is" and no warranties are given or liabilities of any kind are assumed with respect to the quality of such information, including, but not limited to, its fitness for a specific purpose, non-infringement of third party rights or its correctness. The reproduction, distribution and utilization of this document as well as the communication of its contents to others without explicit authorisation is prohibited. Copies - digital or printed are not controlled.





Legend

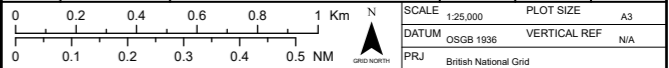
- Onshore Development Area
- Sections of Onshore Cable Route
- Access Work Area
- Vegetation Clearance Extents
- Visibility Splay Work Area
- Indicative Zone Of Off Route Access
- Indicative Temporary Construction Compound Zones
- Indicative Trenchless Crossing Zones
- 100m Cable Corridor

MAP NOTES / DATA SOURCES:
 Contains OS data © Crown Copyright and database right 2023
 Contains data from OS Zoomstack, Esri UK, Esri, HERE, Garmin, Foursquare, FAO, METI/NASA, USGS, Esri, Ordnance Survey, NASA, NGA, USGS
 Not to be used for Navigation.

PROJECT TITLE **Dogger Bank South**
DRAWING TITLE **GIS Data for Public Map Onshore**

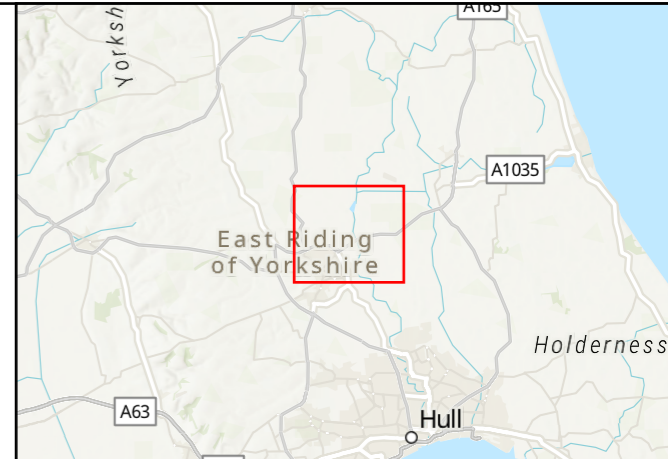
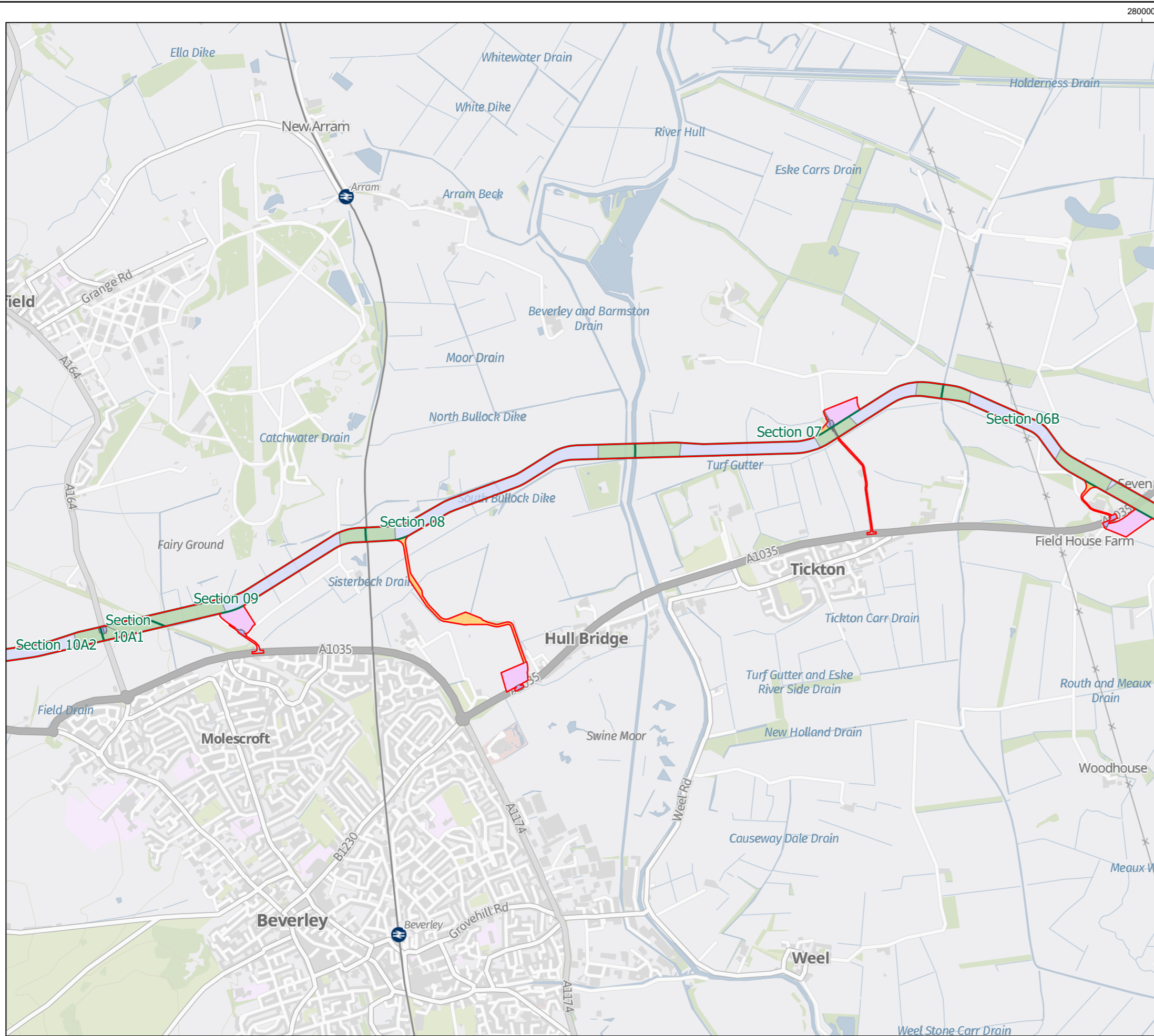
DRAWING NUMBER: **004782314-02** **PAGE NUMBER:** **Page 1 of 1**

VER	DATE	REMARKS	DRAW	CHEK	APRD
0	12/05/2023	First Issue	C Gregg		E Johnson
0	03/11/2023	Updated with ES/DCO Stage Data	C Gregg		E Johnson



This is made available "as is" and no warranties are given or liabilities of any kind are assumed with respect to the quality of such information, including, but not limited to, its fitness for a specific purpose, non-infringement of third party rights or its correctness. The reproduction, distribution and utilization of this document as well as the communication of its contents to others without explicit authorisation is prohibited. Copies - digital or printed are not controlled.





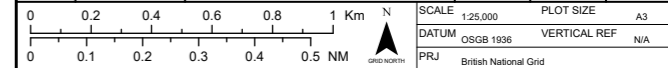
- Onshore Development Area
- Sections of Onshore Cable Route
- Access Work Area
- Vegetation Clearance Extents
- Visibility Splay Work Area
- Potential Road Widening Area
- Indicative Zone Of Off Route Access
- Indicative Temporary Construction Compound Zones
- Indicative Trenchless Crossing Zones
- 100m Cable Corridor

MAP NOTES / DATA SOURCES:
 Esri, CGIAR, USGS. Contains OS data © Crown Copyright and database right 2023
 Contains data from OS Zoomstack, Esri UK, Esri, HERE, Garmin, Foursquare, FAO, MET/NASA, USGS
 Not to be used for Navigation.

PROJECT TITLE **Dogger Bank South**
 DRAWING TITLE **GIS Data for Public Map Onshore**

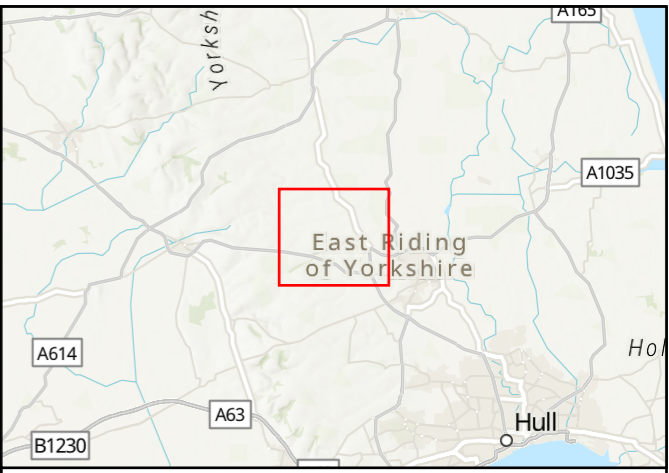
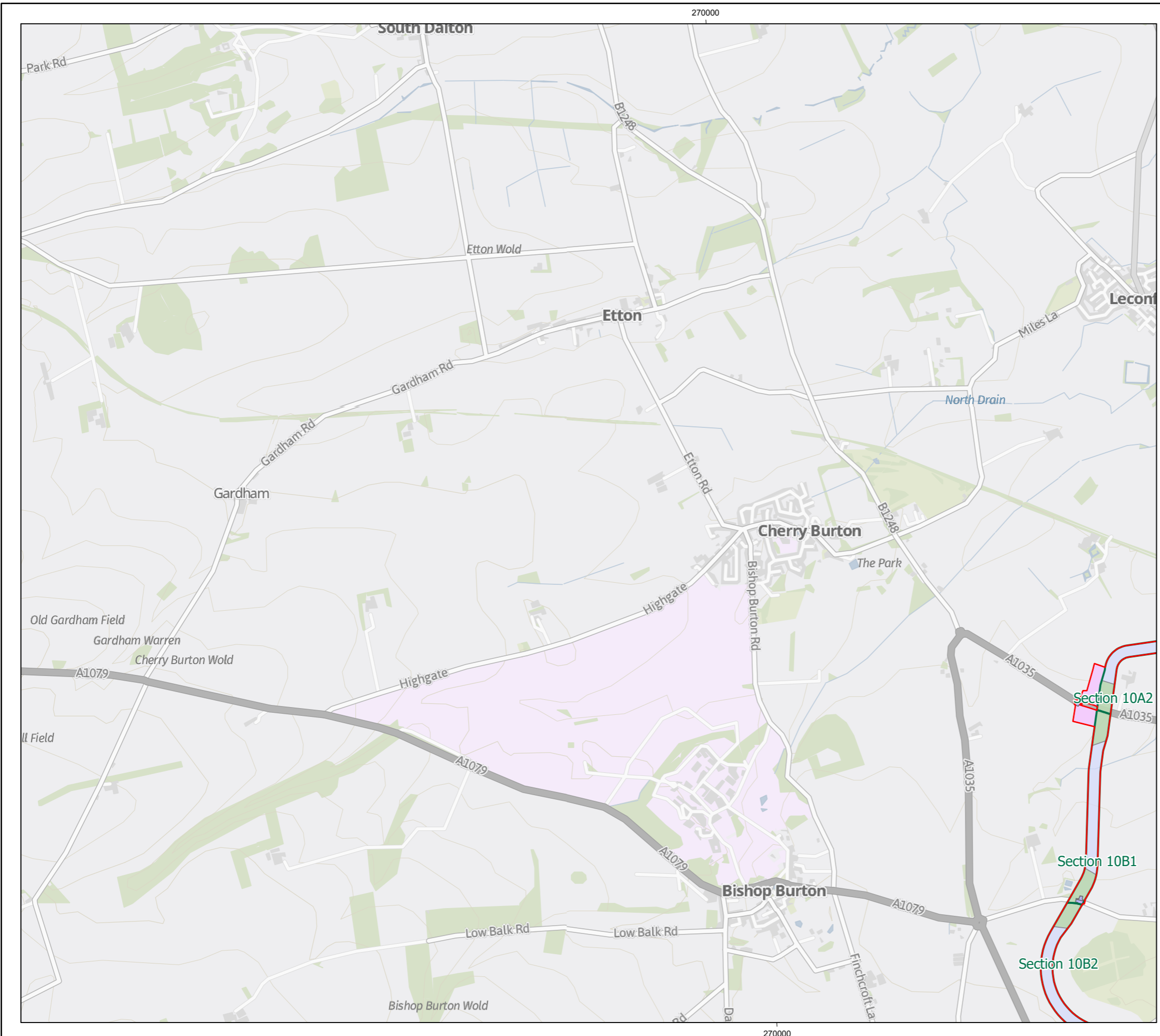
DRAWING NUMBER: **004782314-02** PAGE NUMBER: **Page 1 of 1**

VER	DATE	REMARKS	DRAW	CHEK	APRD
0	12/05/2023	First Issue	C Gregg		E Johnson
0	03/11/2023	Updated with ES/DCO Stage Data	C Gregg		E Johnson



This is made available "as is" and no warranties are given or liabilities of any kind are assumed with respect to the quality of such information, including, but not limited to, its fitness for a specific purpose, non-infringement of third party rights or its correctness. The reproduction, distribution and utilization of this document as well as the communication of its contents to others without explicit authorisation is prohibited. Copies - digital or printed are not controlled.





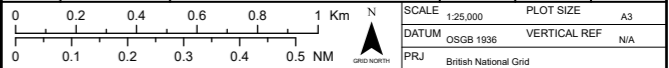
- Onshore Development Area
- Sections of Onshore Cable Route
- Access Work Area
- Indicative Temporary Construction Compound Zones
- Indicative Trenchless Crossing Zones
- 100m Cable Corridor

MAP NOTES / DATA SOURCES:
 Esri, CGIAR, USGS. Contains OS data © Crown Copyright and database right 2023
 Contains data from OS Zoomstack, Esri UK, Esri, HERE, Garmin, Foursquare, FAO, MET/NASA, USGS
 Not to be used for Navigation.

PROJECT TITLE **Dogger Bank South**
 DRAWING TITLE **GIS Data for Public Map Onshore**

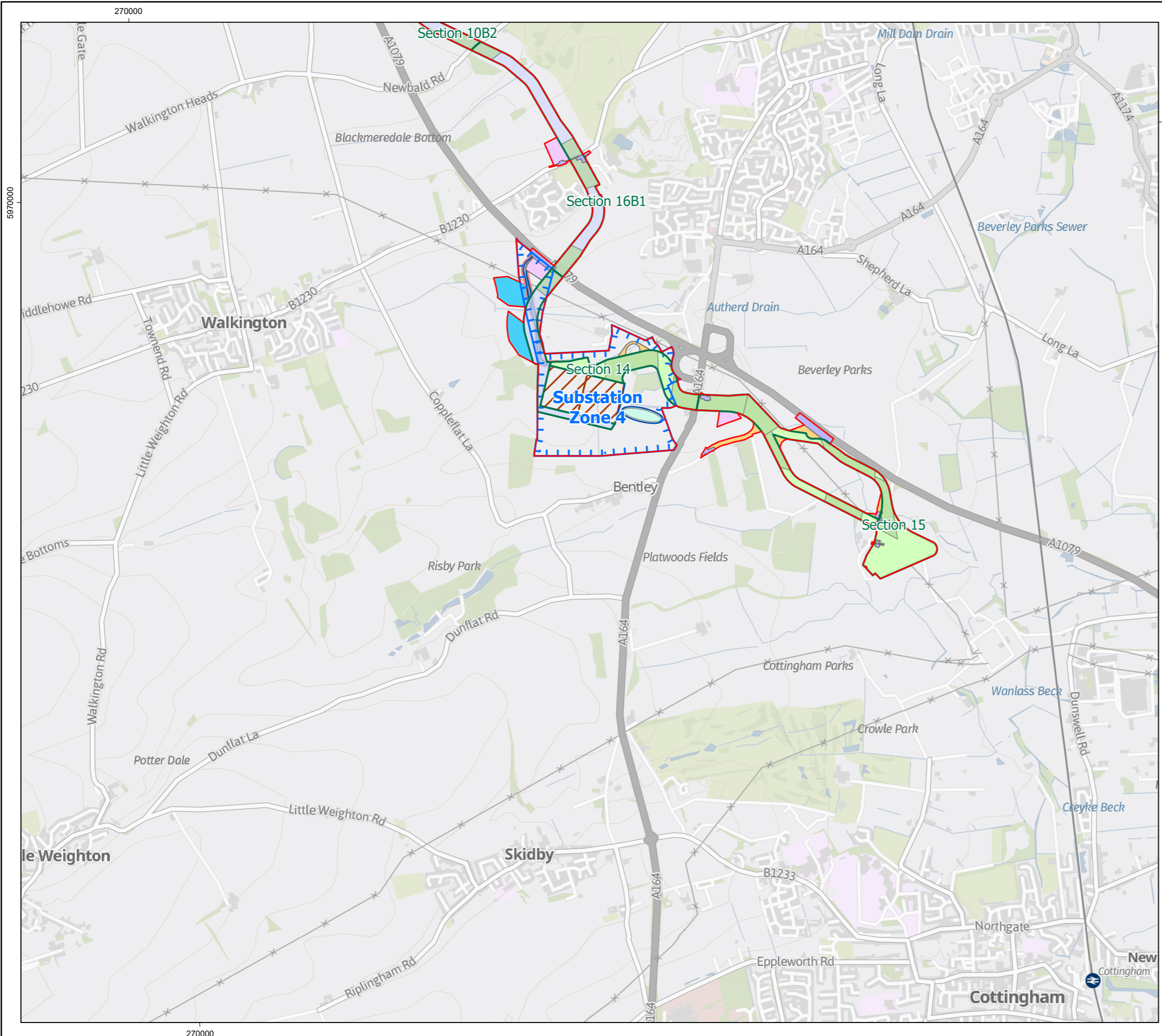
DRAWING NUMBER: **004782314-02** PAGE NUMBER: **Page 1 of 1**

VER	DATE	REMARKS	DRAW	CHEK	APRD
0	12/05/2023	First Issue	C Gregg		E Johnson
0	03/11/2023	Updated with ES/DCO Stage Data	C Gregg		E Johnson



This is made available "as is" and no warranties are given or liabilities of any kind are assumed with respect to the quality of such information, including, but not limited to, its fitness for a specific purpose, non-infringement of third party rights or its correctness. The reproduction, distribution and utilization of this document as well as the communication of its contents to others without explicit authorisation is prohibited. Copies - digital or printed are not controlled.





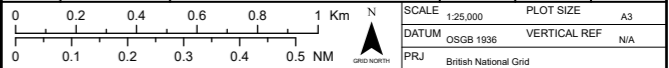
- Onshore Development Area
- Sections of Onshore Cable Route
- Substation Zones
- Access Work Area
- Vegetation Clearance Extents
- Visibility Splay Work Area
- Indicative Zone Of Off Route Access
- Indicative Temporary Construction Compound Zones
- Indicative Trenchless Crossing Zones
- 100m Cable Corridor
- Onward Connection to National Grid
- Indicative Earthworks Extents
- Indicative Road Construction Area
- Indicative Substation Permanent Access Roads
- Indicative Substation Footprints
- Indicative Substation Temporary Construction Compounds
- Indicative Permanent Drainage Basins

MAP NOTES / DATA SOURCES:
 Esri, CGIAR, USGS. Contains OS data © Crown Copyright and database right 2023
 Contains data from OS Zoomstack, Esri UK, Esri, HERE, Garmin, Foursquare, FAO, MET/NASA, USGS
 Not to be used for Navigation.

PROJECT TITLE **Dogger Bank South**
 DRAWING TITLE **GIS Data for Public Map Onshore**

DRAWING NUMBER: **004782314-02** PAGE NUMBER: **Page 1 of 1**

VER	DATE	REMARKS	DRAW	CHEK	APRD
0	12/05/2023	First Issue	C Gregg		E Johnson
0	03/11/2023	Updated with ES/DCO Stage Data	C Gregg		E Johnson



This is made available "as is" and no warranties are given or liabilities of any kind are assumed with respect to the quality of such information, including, but not limited to, its fitness for a specific purpose, non-infringement of third party rights or its correctness. The reproduction, distribution and utilization of this document as well as the communication of its contents to others without explicit authorisation is prohibited. Copies - digital or printed are not controlled

